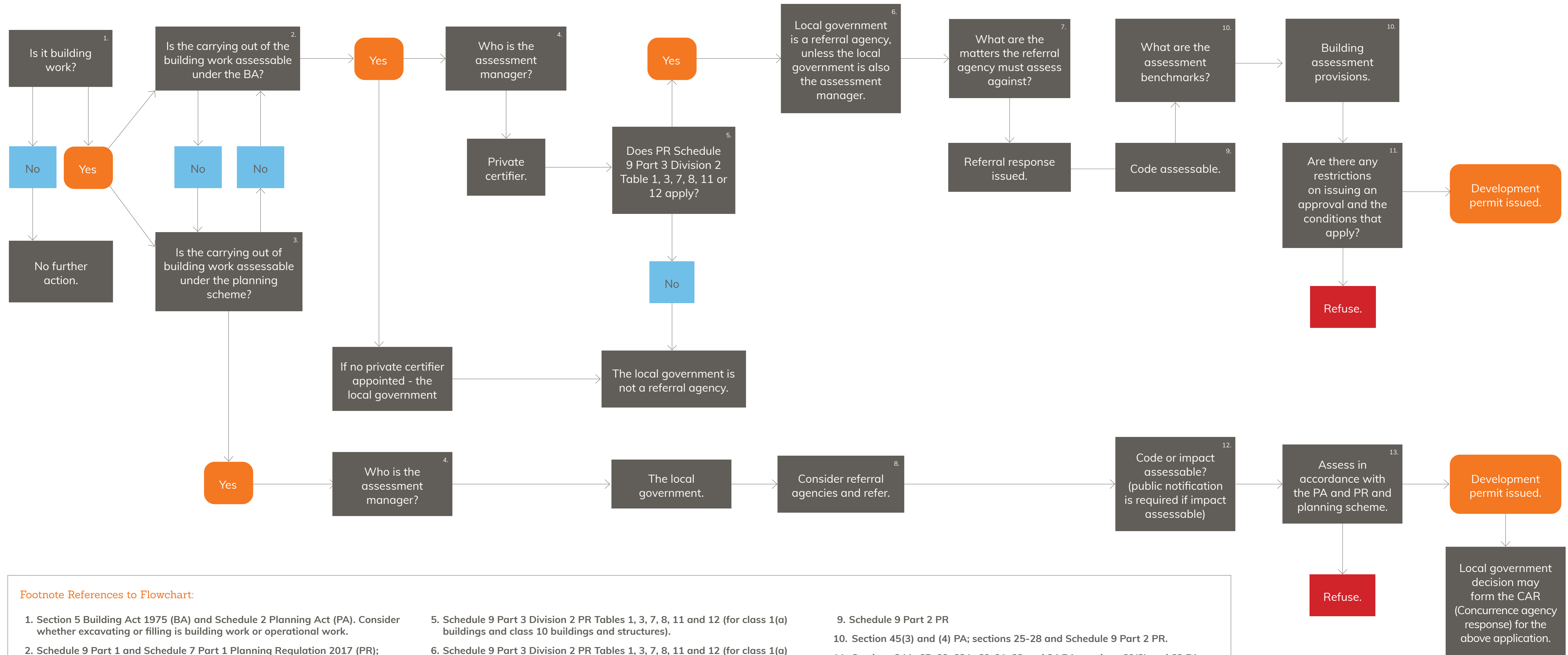


ASSESSMENT OF BUILDING WORK



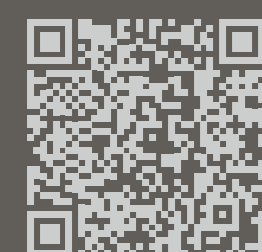
Footnote References to Flowchart:

- 1. Section 5 Building Act 1975 (BA) and Schedule 2 Planning Act (PA). Consider whether excavating or filling is building work or operational work.
- 2. Schedule 9 Part 1 and Schedule 7 Part 1 Planning Regulation 2017 (PR); section 21 BA; section 4 and Schedules 1 and 2 Building Regulation 2021 (BR).
- 3. Schedule 6 Part 1 PR (not applicable); Planning Scheme.
- 4. Section 48 PA; section 21 and Schedule 8 PR; section 11 BA.

- 5. Schedule 9 Part 3 Division 2 PR Tables 1, 3, 7, 8, 11 and 12 (for class 1(a) buildings and class 10 buildings and structures).
- 6. Schedule 9 Part 3 Division 2 PR Tables 1, 3, 7, 8, 11 and 12 (for class 1(a) buildings and class 10 buildings and structures); section 54(3) PA.
- 7. Sections 54-56 PA; section 22 and Schedule 9 Part 3 Division 2 PR.
- 8. Schedule 10 PR

- 9. Schedule 9 Part 2 PR
- 10. Section 45(3) and (4) PA; sections 25-28 and Schedule 9 Part 2 PR.
- 11. Sections 34A, 65, 68, 68A, 69-81, 83 and 84 BA; sections 60(2) and 62 PA.
- 12. See planning scheme (assuming Schedule 6 of the PR is not applicable).
- 13. For impact assessment – sections 45(5) to (8) PA; sections 29-31 and Schedule 10 PR; Planning Scheme.

More information:



Scan for further planning & environment resources.

Maroochydore

4/59 The Esplanade
PO Box 841
Maroochydore QLD 4558
P 07 5479 0155
E reception@paelaw.com

Cairns

Level 1 Bolands Centre
14 Spence Street
Cairns QLD 4870
P 07 4041 7622
E cairnsreception@paelaw.com

Brisbane

Suite 55-53, Level 9 Northpoint
231 North Quay Brisbane QLD 4000
PO Box 12213 George Street QLD 4003
P 07 3067 8827
E brisbanereception@paelaw.com